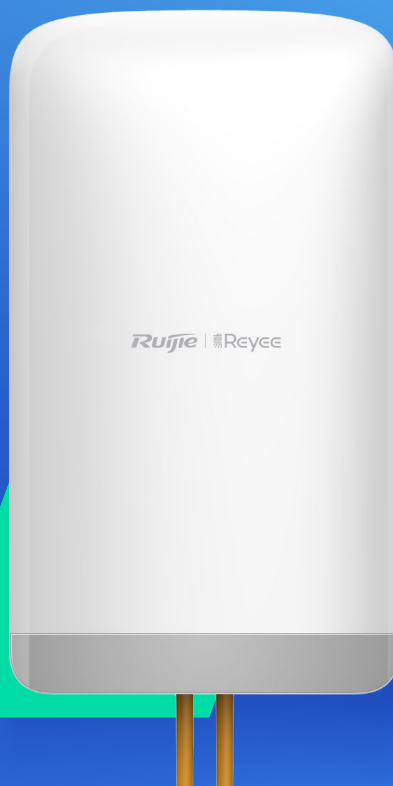


# RG-EST350 V2

## 5GHz Dual-stream 802.11ac

## 5KM Wireless Bridge

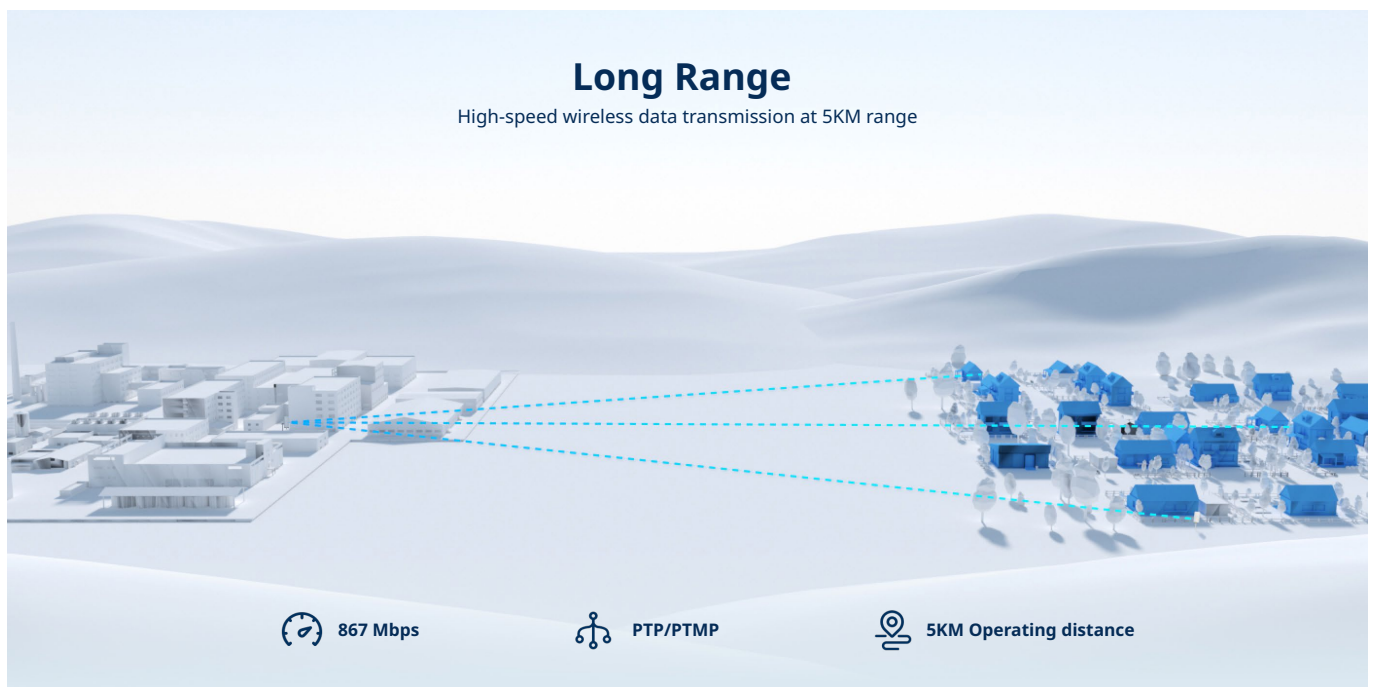
DATASHEET



### Highlights

- RG-EST350 V2 can easily transmit data from 5KM away in real time
- Automatic pairing at long distance, without complex alignment
- IP54 Weatherproof, -30°C~65°C guarantee stable operating at outdoor environment
- Support maximum 45 x 2MP cameras loading at 3KM, 20 x 2MP cameras loading at 5KM
- Visually Intuitive statistics monitoring on Ruijie cloud, easy maintenance at remotely

# Highlight Features





# Highlight Features

## High Capacity

45 cameras maximum at 3KM, 20 cameras maximum at 5KM\*



2MP

3KM

x 45 Units



2MP

5KM

x 20 Units

\*H.265, 2MP Cameras, 3Mbps. To guarantee the transmission quality, the environment should be kept as open as possible to reduce the interference. At the same time, it is recommended to adjust it to the best alignment angle with the signal strength indicator or Ruijie Cloud APP.

## Reliable



V0 level  
flame retardant



IP54  
Weatherproof

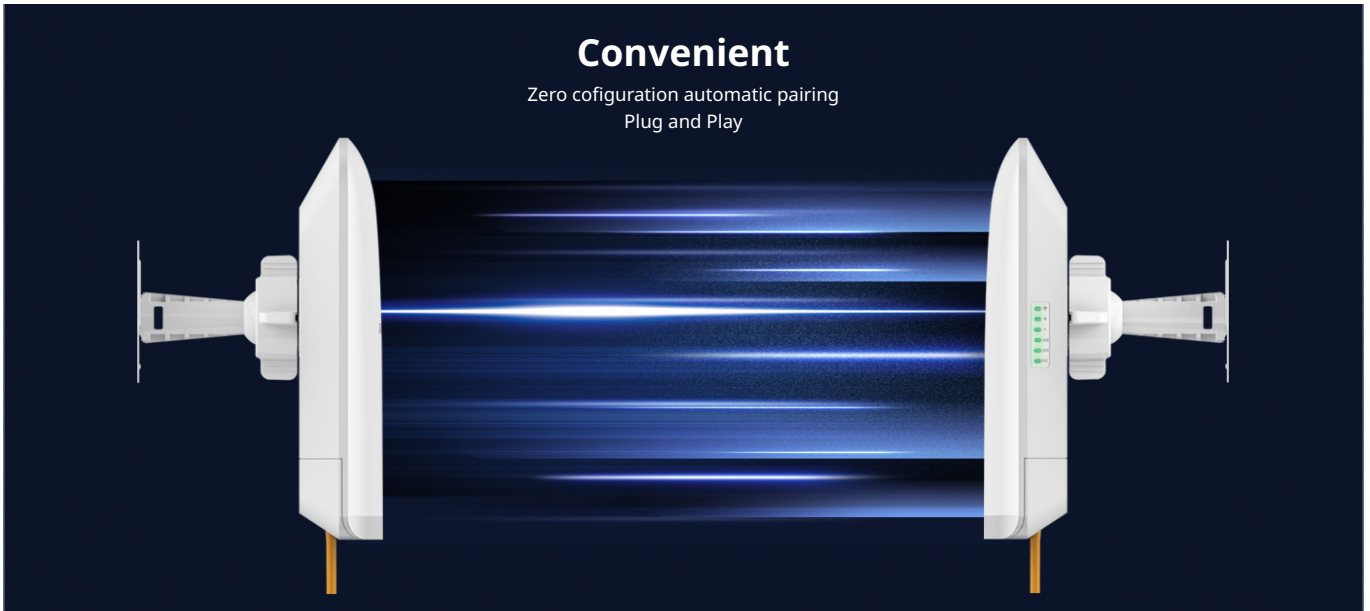


-30~65°C operating  
temperature

## Highlight Features

### Convenient

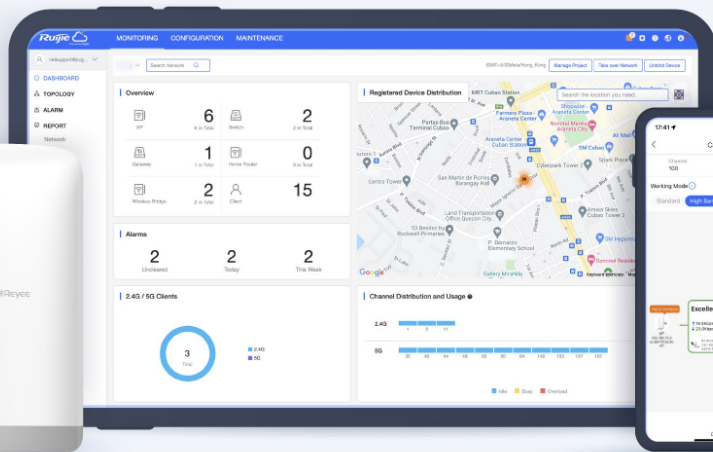
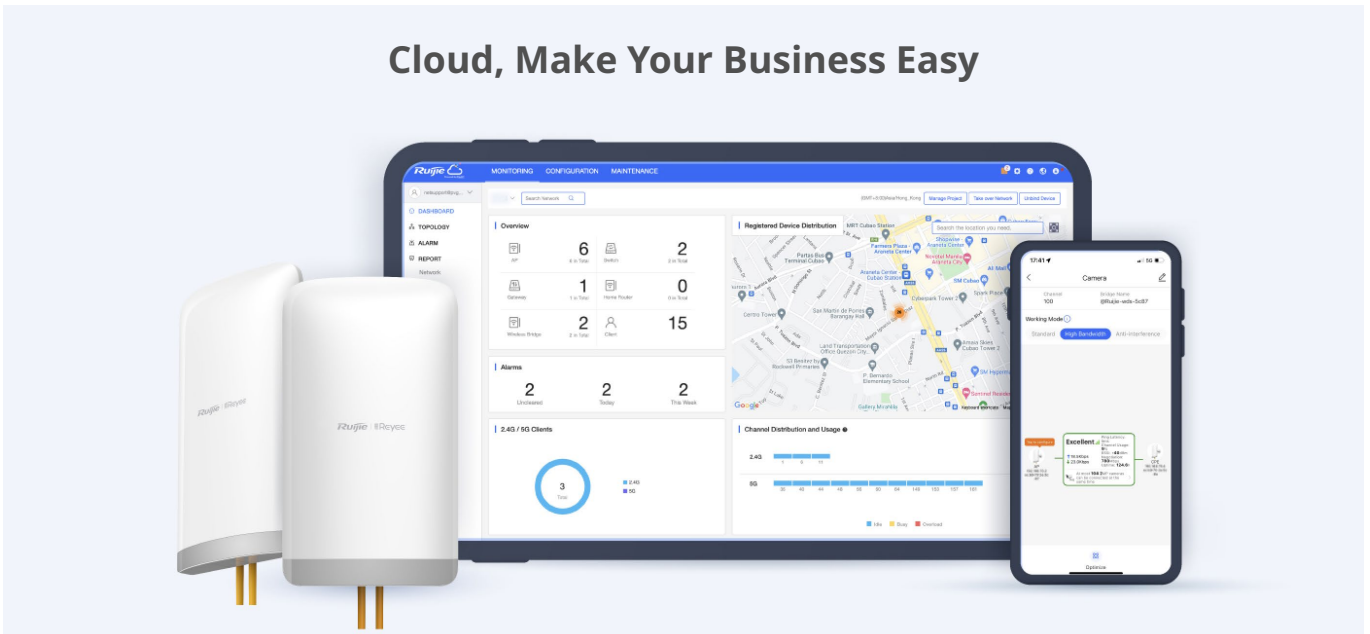
Zero configuration automatic pairing  
Plug and Play



### Easy to Install



### Cloud, Make Your Business Easy



## Specifications

### Basic

Radio Design	5 GHz Single-Band Dual-Stream
Operating Band	802.11a/n/ac: 5.150~5.350GHz, 5.470~5.725GHz, 5.725~5.850GHz (country specific) Note: Allowable frequencies and bands are dictated by individual country regulations. Thailand product does not support 5.150-5.350GHz outdoors.
Transmit Power	EIRP: ≤43 dBm (5GHz) country-specific restrictions apply Thailand: 5470 MHz~5725 MHz ≤ 30 dBm 5725 MHz~5850 MHz ≤ 30 dBm
Antenna	Directional antennas, 15 dBi
Polarization	Horizontal: 31°, Vertical: 14°
Bridging Distance	5 KM (recommended)
Spatial Streams	2x2, MU-MIMO
Memory/Flash	128 MB/8 MB
Maximum Throughput	Up to 867 Mbps at 5 GHz
Ports	2 10/100/1000Base-T Ethernet ports, port 1 with Passive PoE
Max. Transmit Power	≤400 mW (adjustable)
IP Rating	IP54
Lightning Protection	4 KV
Installation	Wall-mounted/ Pole-mounted
Weight	0.5 kg
Dimensions ( D x W x H )	230 mm × 132 mm × 48 mm

### Software Features

	IPv4
802.1Q VLAN	✓
Multi-VLAN Transparent Transmission	✓



# Specifications

## Software Features

### IPv4

ARP	256
Max. Concurrent Connections	8000
Ping	✓
Traceroute	✓
Unicast traffic	✓
DHCP Client	✓
DNS Client	✓
Static IP address	✓
IP Collision Avoidance	✓
Management IP	192.168.120.1

### Routing

Default Route	✓
---------------	---

### Wireless

SSID/SSID Hiding	✓
------------------	---

Password Open / WPA-PSK / WPA2-PSK / WPA/WPA2-PSK

RSSI	-58 dBm@1KM -66 dBm@3KM -70 dBm@5KM
------	---

Performance 230 Mbps@1KM(HT40)  
200 Mbps@3KM(HT40)  
150 Mbps@5KM(HT40)

One-Click Optimization	✓
------------------------	---

DFS ✓

Local Forwarding	✓
------------------	---

WLAN QoS WMM

# Specifications

## Software Features

### Management

Zero Provisioning on Cloud	QR-Code / Serial Number
CWMP(TR069) Support	✓
Point-to-Point	✓
Point-to-Multipoint	Recommended 3
Self-Organizing Network	Max. 200 wireless bridges
AP/CPE Switchover	✓
Interface Configuration	✓
Country Code	176 countries support, details refer to Country&Region Code reference
Clock setting	✓
Time Zone	✓

### Maintanance

Alarm	IP address conflict / SSID / Offline
Diagnostics	✓
Reboot	✓
Reset	✓

### Cloud Features

Remote Access	✓
Remote Reboot	✓
Statistics Monitoring	✓
Working mode	Normal / High performance / Anti-interference
Remote SSH	✓
Remote EWeb	✓

# Specifications

## Software Features

### Camera Reference

3Mbps Video Bit Rate	50 Units/1KM 45 Units/3KM 20 Units/5KM
4-5Mbps Video Bit Rate	30 Units/1KM 25 Units/3KM 12 Units/5KM
6Mbps Video Bit Rate	20 Units/1KM 13 Units/3KM 8 Units/5KM

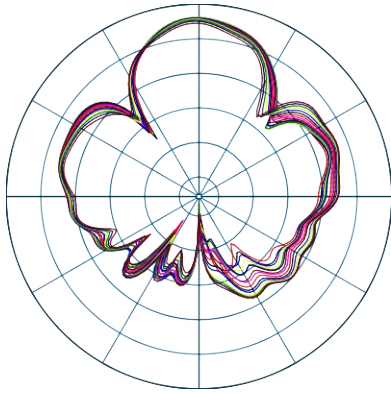
## Hardware Features

### Physical Features

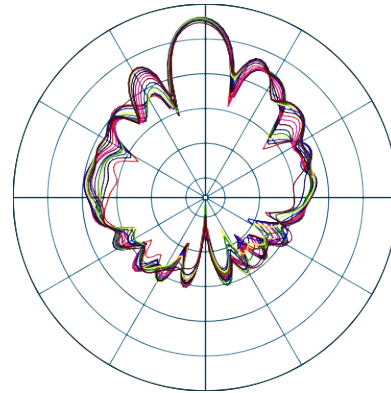
LED indicator	LEDs indicate the bridging quality: LED off: No bridging One LED blinking: <-75dBm One LED on: -75dBm< RSSI <-73dBm One LED on and one LED blinking: -73dBm< RSSI <-71dBm Two LEDs on: -71dBm< RSSI <-68dBm Two LEDs on and one LED blinking: -68dBm< RSSI <-64dBm Three LEDs on: >-64dBm
Hardware Button	1 reset button
Power Supply	12 VDC power supply or 24 VDC Passive PoE
Power Consumption	< 9W
Environment	Operating temperature: -30°C to 65°C (-22°F ~ 149°F) Storage temperature: -40°C to 85°C (-40°F ~ 185°F) Operating humidity: 5% to 95% (noncondensing) Storage humidity: 5% to 95% (noncondensing)
MTBF	> 250,000H



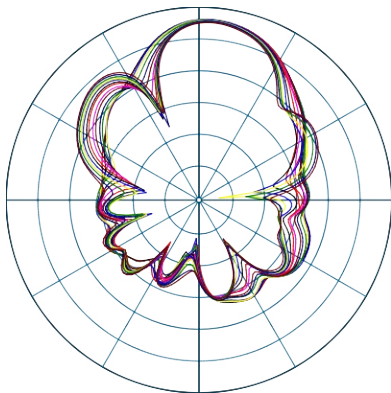
## Antenna Polarization



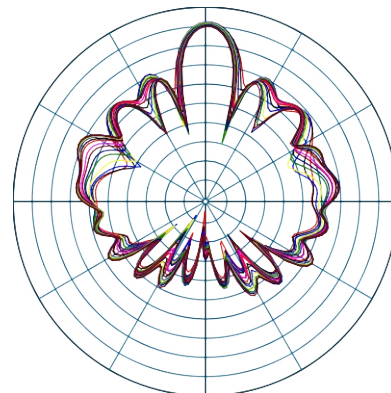
Vertical Azimuth



Vertical Elevation



Horizontal Azimuth



Horizontal Elevation

## Package Contents

Device	RG-EST350 V2 * 2
Mounting Bracket	2
Hose Clamps	2
Universal Joint Assemblies	2
Power supply	Power adapter * 2
User Manual	1
Wall Anchors	6
Phillips Pan Head Screws	8
Package Weight	2.3 kg
Package Dimension (w x d x h)	490 mm * 363 mm * 80 mm

**Ruijie | Rcycc**

 **Redefine your easy network**

---

**Copyright ©2000-2023 Ruijie Networks Co., Ltd. All rights reserved.**

No part of this document may be reproduced or transmitted in any form or any means without prior written consent of Ruijie Networks Co., Ltd.

**Notice**

This content is applicable only to regions outside the China mainland. Ruijie Networks Co., Ltd. reserves the right to interpret this content.

The information contained herein is subject to change without notice. Nothing herein should be construed as constituting an additional warranty. Ruijie Networks Co., Ltd. shall not be liable for technical or editorial errors or omissions contained herein.



Ruijie Networks Co., Ltd.  
Building 19, Juyuanzhou Industrial Park, No.618  
Jinshan Road, Cangshan District, Fuzhou, Fujian, China  
Website: <https://www.ruijienetworks.com>